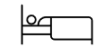


# Hideaway

66m<sup>2</sup>



2 Bedroom



1 Living Room



1 Bathroom



## HOUSE #2528

### COMPLIANCE & GUARANTEES

- Building pre-consented for at our yard
- Built design for very high wind zone
- LPB Drawings and Specifications
- LPB Builders
- LBP Roofer
- Plumbing Certificate
- Electrical Certificate

### EXTERIOR

- Subfloor bearers and SS pile connections
- Floor joists and T&G particle board flooring
- Under floor Insulation R2.5 Expol
- Cladding H3 Timber bevelback weatherboards
- MAXAM Colorsteel roof
- Colorsteel guttering and PVC downpipes
- All windows and exterior doors double glazed
- Wall Insulation R2.8
- Ceiling Insulation R7.0

### ELECTRICAL

- Interior switchboard with smart meter
- LED recessed ceiling lights
- LED pendant light in kitchen
- 1x Bathroom Manrose Pro Series fan/heater/light
- 1x Vanity light
- 1x Heated towel rail ladder chrome
- Daikin heat pump in living area

### PLUMBING FITTINGS

- 1x Bathroom shower
- 1x Vanity wall hung with mirror
- 1 x Back to wall toilet
- Laundry with slintub and sink mixer
- 180Ltr Hot water cylinder

### INTERIOR FINISHINGS AND DOORS

- All interior walls are lined in T&G pine timber (blonded)
- Gib board ceilings throughout, stopped to level 4
- Scotia and architraves in pine timber
- Interior painted doors with satin chrome handles

### PAINTING

- Painted exterior soffits and fascia
- Interior solid timber walls stained (Blonded)
- All interior gib board walls and ceilings painted
- All interior doors painted

### KITCHEN

- Laminate bench tops with stainless steel sink
- Cabinetry with soft close doors & drawers
- Splashback to rear wall of stove bench
- Fisher & Paykel Cooktop 4 element ceramic
- Fisher & Paykel Oven
- Rangehood integrated into cabinetry
- Fisher & Paykel dishwasher

### INTERIOR FURNISHINGS

- Curtains and blinds
- Vinyl planks to kitchen, dining, laundry, and wet areas
- Solution dyed nylon carpet

### OWNERS OBLIGATIONS (which we can assist)

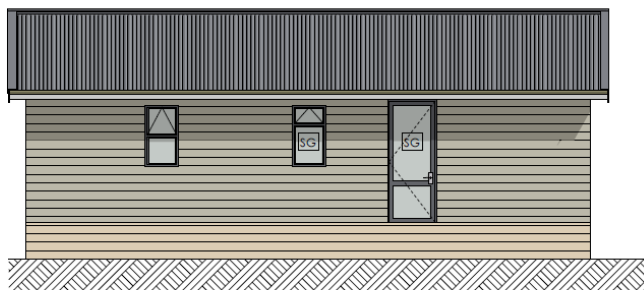
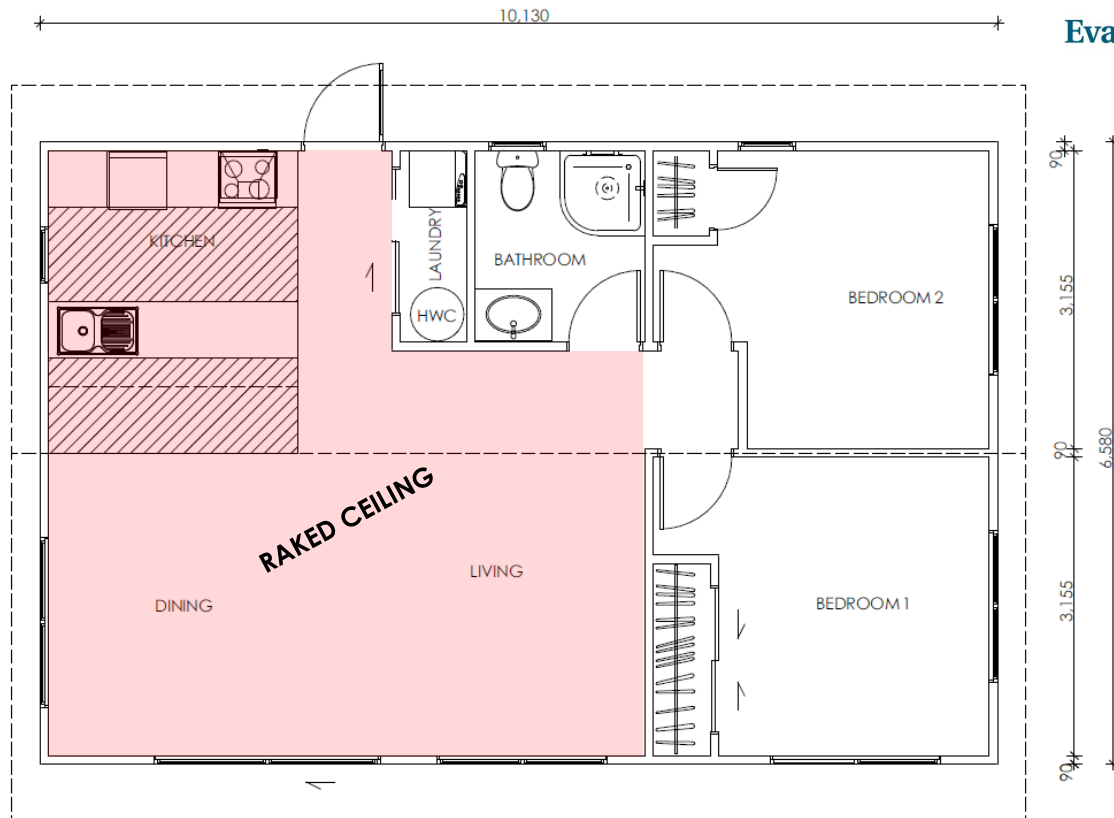
- ◇ Application for site permits
- ◇ Site Geo Tech and storm water reports
- ◇ Onsite connections (sewer, storm water, power)
- ◇ House transportation and foundations
- ◇ Decking and steps
- ◇ Pergola

# Hideaway

66m<sup>2</sup>

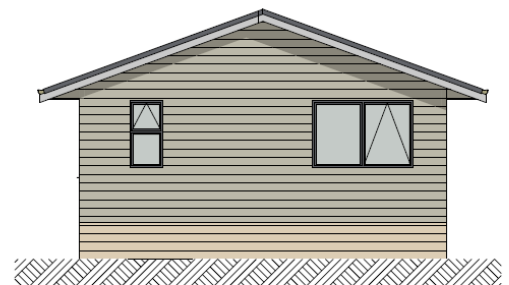


Evans Homes

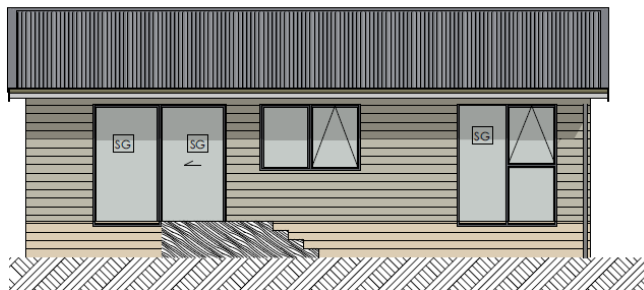


ELEVATION A

SG Indicates Safety Glazing in accordance with NZS 4223:2016



ELEVATION B



ELEVATION C



ELEVATION D

Would you  
like to know  
more?



027 497 1183



evanshomes@xtra.co.nz

